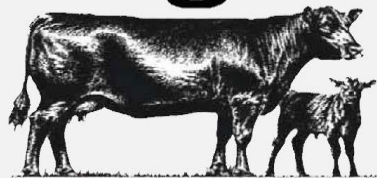


E W A West Point 7258

EDGEWOOD
angus



Registered Angus



- E W A West Point 7258 (19054061)
- Sire: G A R Momentum (17354145)
- Dam: E W A 3114 of 128 Weigh Up (17816337)
- Dam's Sire: Plattermere Weigh Up K360 (16692552)

Genomic Enhanced EPDs *1/3/19

CED	BW	WW	YW	RADG	DMI	YH	SC	Doc
+12	+1.5	+75	+136	+0.30	+0.51	+0.8	+0.41	+26
HP	CEM	Milk	MW	MH	\$EN			
+11.2	+12	+42	+59	+0.8	-45.72			
CW	Marb	RE	Fat					
+72	+1.63	+0.97	+0.013					
\$W	\$F	\$G	\$QG	\$YG	\$B			
+84.00	+110.85	+64.87	+61.10	+3.77	+213.41			

- Calving Ease, Growth, Docility, Fertility, Milking Ability, Industry Leading Marbling
- Whether breeding for maternal and/or terminal traits...West Point does it all
- High quality semen available for \$40 per straw

Edgewood Angus

Pete Henderson – (757) 880-7274

pete@hendersoninc.com

Peter Henderson - (757) 298-6300

peter@hendersoninc.com

Marketing & Genetics Consultant

Doug Harris – (804) 332-1456

wdouglasharris@verizon.net

West Point Associates

Cartrite Angus Ranch – Tommy Cartrite

Dockter's W-Heart Ranch – David Dockter

Kaiser Angus – Darrell Kaiser

M & W Cattle Company – Mike Willis

Oakdale Farms – Bill & Judy Watters

Powell Farms – Jim Powell